

November 16, 2022



To Eeyou Istchee James Bay Regional Government authorities  
2, rue des Rapides  
C.P. 819  
Matagami, Qc.

The purpose of this letter is to inform the Eeyou Istchee James Bay Regional Government authorities of the mining exploration work of Midland Exploration Inc. in the territory of Eeyou Istchee James Bay.

Midland Exploration Inc. would like to inform you of our upcoming exploration work on the Lewis project, located approximately 65 km west / southwest of the Town of Chapais and 10 km (west end) south-east of the village of Waswanipi and 2.5 km south of Lake Lewis (see maps below).

The work will consist of diamond drilling in the southern area of Lake Lewis. Between 4 and 5 drill holes will be drilled for an approximate total of 750 meters. This is the first drilling campaign on the Lewis project by Midland Exploration. Drilling should take place between the end of February and the end of March. Approximately two weeks will be necessary to complete the drilling. Travel to and on the property will be by pick-up truck and skidoo. The movements of the drill will be on the ground using machinery (e.g., small bulldozer). Forest roads and trails lead up within 200 meters from the drilling sites.

During the drilling program, the work will be carried out by a team of one Midland Exploration geologist, two technicians, as well as a diamond drilling team (from Diafor Inc based in Rivière-Héva, Abitibi) of 5 to 6 people. The drilling team accommodation site is still unknown at this moment.

Midland has taken note of and is applying government and public health recommendations regarding health measures regarding the coronavirus pandemic. Midland Exploration will be kept informed of the latest recommendations from Public Health before the departure of these teams.

Because of COVID-19 situation, limiting contact with the local community, and of the early stage of this exploration program, we shall not require employment from qualified candidates from the local community. However, rest assured that we will consider the option if positive results from this exploration program requires us to advance the project to a next stage.

Finally, do not hesitate to ask for additional information.

A handwritten signature in black ink, appearing to read "Philippe Allard", written over a horizontal line.

Philippe Allard, geo.

Midland Exploration Inc.

[philippe.allard@midlandexploration.com](mailto:philippe.allard@midlandexploration.com)

[Cell: 514-772-1480](tel:514-772-1480)

Exploration Midland Inc.

132 boul. Labelle – suite 220

Rosemère, Québec, J7A 2H1

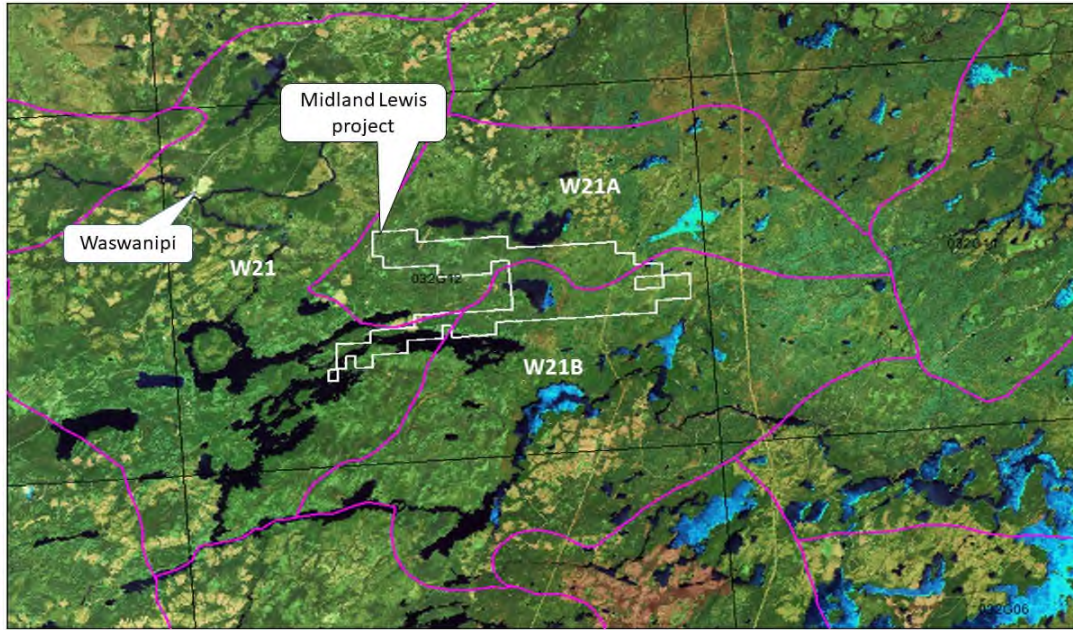
[www.midlandexploration.com](http://www.midlandexploration.com)

CC. Mr. Youcef Larbi, Director General, Cree Mineral Exploration Board.

Mr. Gino Roger, President

Mr. Mario Masson, Vice-president Exploration

Encl. **Location Maps below**



Lewis Project location

### Fieldwork location

